

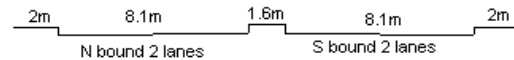
YEAR 2023

CORE STATION 1017

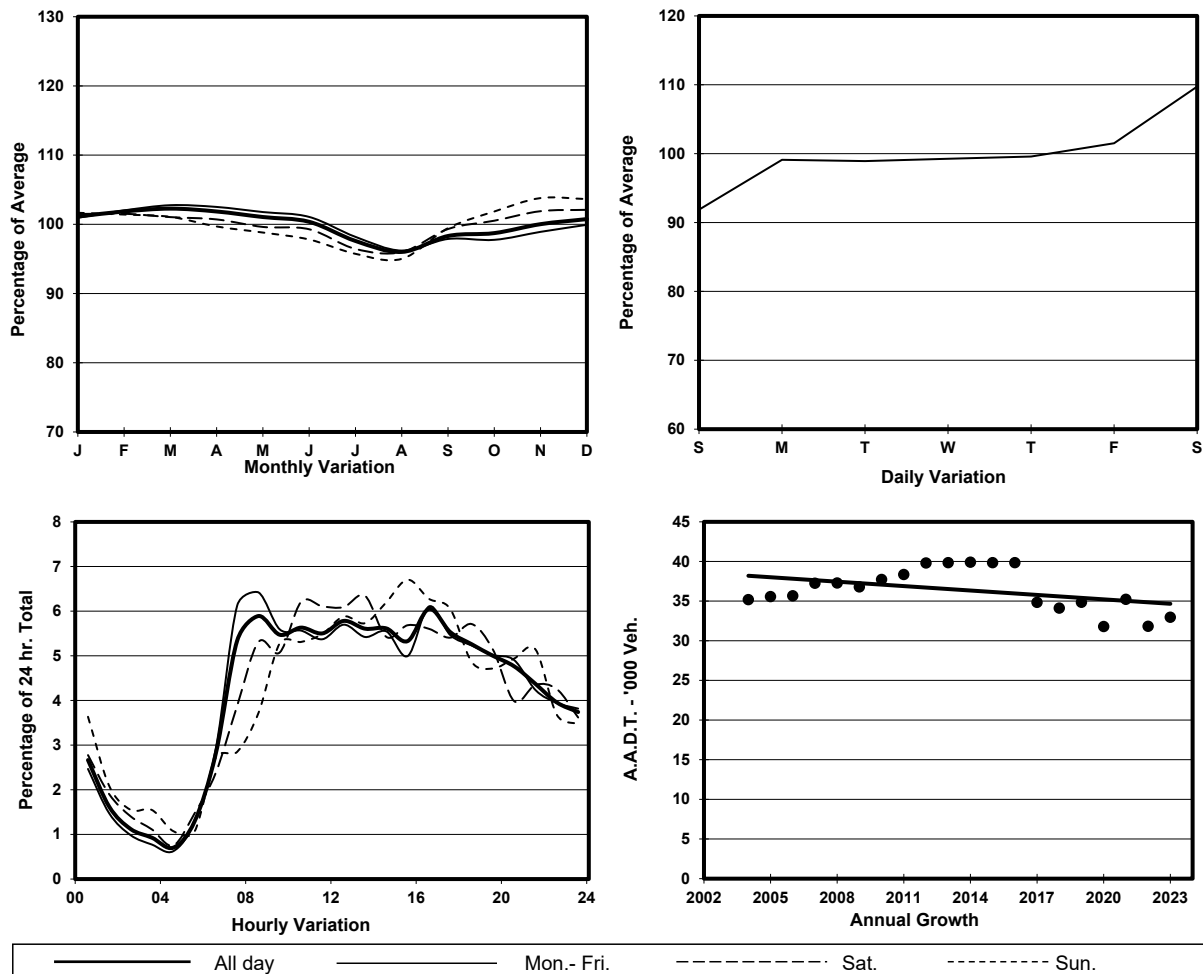
ROAD NETWORK MAJOR

ROAD TYPE DISTRICT DISTRIBUTOR

LINK AP LEI CHAU BRIDGE & AP LEI CHAU BRIDGE RD
(from WONG CHUK HANG RD to AP LEI CHAU EST)



1. TRAFFIC FLOW VARIATION AND GROWTH



2. TRAFFIC CHARACTERISTICS (BY DIRECTION)

Parameter	All - Day	Mon. - Fri.	Sat.	Sun.
SOUTH BOUND				
A.A.D.T.	16420	16300	17680	16260
R 12 / 24 - %	64.3	65.1	62.3	62.8
R 16 / 24 - %	84.7	85.5	82.6	82.8
AM Peak Hour	0800-0900	0800-0900	0900-1000	0900-1000
One-way flow at AM peak hour	810	870	880	760
T - % (AM)	-	-	-	-
PM Peak Hour	1600-1700	1600-1700	1600-1700	1600-1700
One-way flow at PM peak hour	1040	1030	1060	1070
T - % (PM)	-	-	-	-
Prop.of commercial vehicles - 16 hr.	-	-	-	-
NORTH BOUND				
A.A.D.T.	16540	16690	18680	14210
R 12 / 24 - %	69.7	69.9	71.2	66.1
R 16 / 24 - %	85.5	85.8	86.4	82.9
AM Peak Hour	0800-0900	0800-0900	0800-0900	0900-1000
One-way flow at AM peak hour	1130	1250	1220	850
T - % (AM)	-	-	-	-
PM Peak Hour	1600-1700	1600-1700	1800-1900	1700-1800
One-way flow at PM peak hour	960	980	1100	960
T - % (PM)	-	-	-	-
Prop.of commercial vehicles - 16 hr.	-	-	-	-

3. OTHER INFORMATION AND COMMENT